

Step 1 Dis-assembly



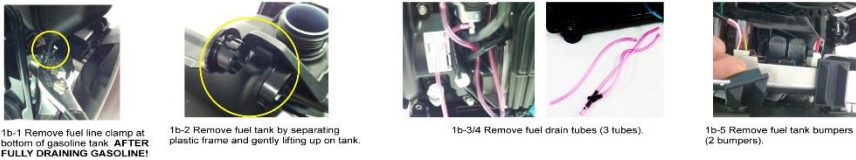
#1 Phillips Head Screw Driver
#2 Phillips Head Screw Driver
Flat head screw driver
8mm socket
10mm socket
3/8" socket
pliers
microwave oven or boiling water
5/32" Allen head socket

DRAIN OUT ALL GASOLINE AND DISPOSE OF SAFELY BEFORE STARTING

Step 1A - Remove skins



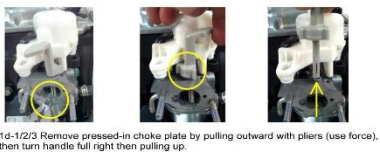
Step 1B - Remove gas tank & drain lines



Step 1C - Remove air cleaner box



Step 1D - Remove choke



Step 1E - Remove muffler & spark arrestor



Step 1F - Remove gasoline lines & pump



Step 1G - Remove carburetor & bolts & ground screw



Step 2 Re-assembly



Step 2A - Prepare gas module and install Honda gas cap boot over inlet



2a-1 Temporarily remove air purge knob & shaft.



2a-2/3/4 Remove Honda gas boot from old gas tank and install over inlet (heat with hot water or carefully microwave for 15 seconds to soften it) **CAUTION - RUBBER WILL BE HOT WEAR SUITABLE GLOVES.**



2a-5/6/5 Re-install air purge knob & shaft then adjust for 1/8" (+/- 1/16") clearance between spring button and lever. **DANGER - MAKE SURE THERE IS A GAP or you will have propane leaking when you connect to your BBQ tank!**

Step 2B - Install gas module into frame



2b-1 Install module from top seating it in gas tank holders



2b-2 Install ground strap using previously removed ground screw.

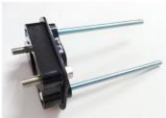


2b-3 Test air purge knob to make sure lever engages spring button and returns into seated position without binding.



2b-4 install supplied propane hose to gas module by pushing onto barbed fitting.

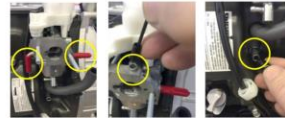
Step 2C - Re-Install carburetor



2c-1/2 Insert new long screws then re-attach block to engine.

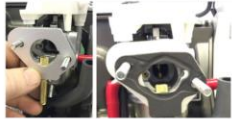


2c-3/4 Re-install gasket then slide carburetor back on. Make sure servo wire is not tight on left side.

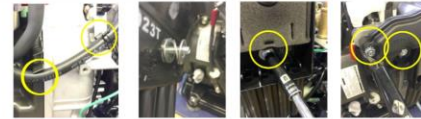


2c-5/6/7 Install red caps on carburetor inlets, small black cap inside choke lever hole, and large black cap over crankcase port.

Step 2D - Install fuel injection module & Air cleaner housing

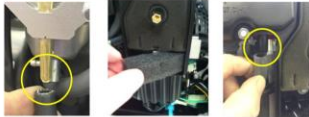


2d-1/2 Slide on the new gasket then slide on the fuel nozzle assembly then slide on the old gasket.



2d-3/4/5/6 Push the fuel line into the upper or lower clamp in bracket and route under bottom tab. Do not attach fuel hose to nozzle assembly yet. Place air cleaner 8mm bolt through air cleaner body and add three supplied washers on backside. Hold onto washer and slide air cleaner onto upper two carburetor studs. Tighten 8mm bolt then install and tighten two supplied 3/8" locking nuts to hold carburetor and injector assembly (you may need to hold 4" bolt from turning by gently pressing on side of exposed threads with finger while tightening nut).

Step 2E - Attach fuel hose and close up air box



2e-1/2/3 Push fuel line all the way onto brass injector, then install air filter element, air filter cover then crankcase install vent tube.

Step 2F - Re-Install muffler with insert



2f-1/2 Place large end of catalyst insert into spark arrestor then insert spark arrestor back into muffler inlet. Re-attach muffler to engine with qty 3 10mm bolts where the longer bolt installed at the lowest hole.

Step 2G - Re-Install skins



2g-1/2/3/4-install side skins by first installing "wood" screw above pull starter then install top two screws starting with back end screw.



2g-5/6 install bottom two 10mm long hex bolts starting with back bolt.



2g-7 Re-install trim (snap in place), then install back plastic cover.



2g-8 Gently loosen two nozzle clamp screws from inside but do not deform front edge of red skins or front cover won't fit properly. Install front & rear cover. Also pull up and down primer ball on top to make sure it moves freely. Back off slightly if it starts to bind. Then fasten front cover in place.

Step 2H - Add labels



2h-1/2/3 Attach "Generator" start label on door next to pull start and the small "Propane" label below it, the LARGE "Propane" Label on opposite side and a small "Propane" label on the back. For all states except California place Emissions label over existing EPA/CARB label on engine frame near oil dip stick. For California place Emissions label next to existing EPA/CARB label on engine frame near oil dip stick.



2h-4 If a high-altitude kit is used change the fuel jet in the end of the fuel tube with the supplied allen head wrench.

Step 2I - Additional steps

Replace oil with fully synthetic 5W-30 or 10W-30

Read supplied "Owner's Manual Supplement"

WARNING:

Propane is a combustible fuel. It should be kept outdoors at all times. If you suspect a leak in your generator or any hoses / connections, you should immediately turn off the fuel at the tank then test connections with soapy water. Do not attempt to use any components including hoses that have leaks. Replace them immediately.